

Figure 1: Geographic location of São Carlos – SP, Brazil.

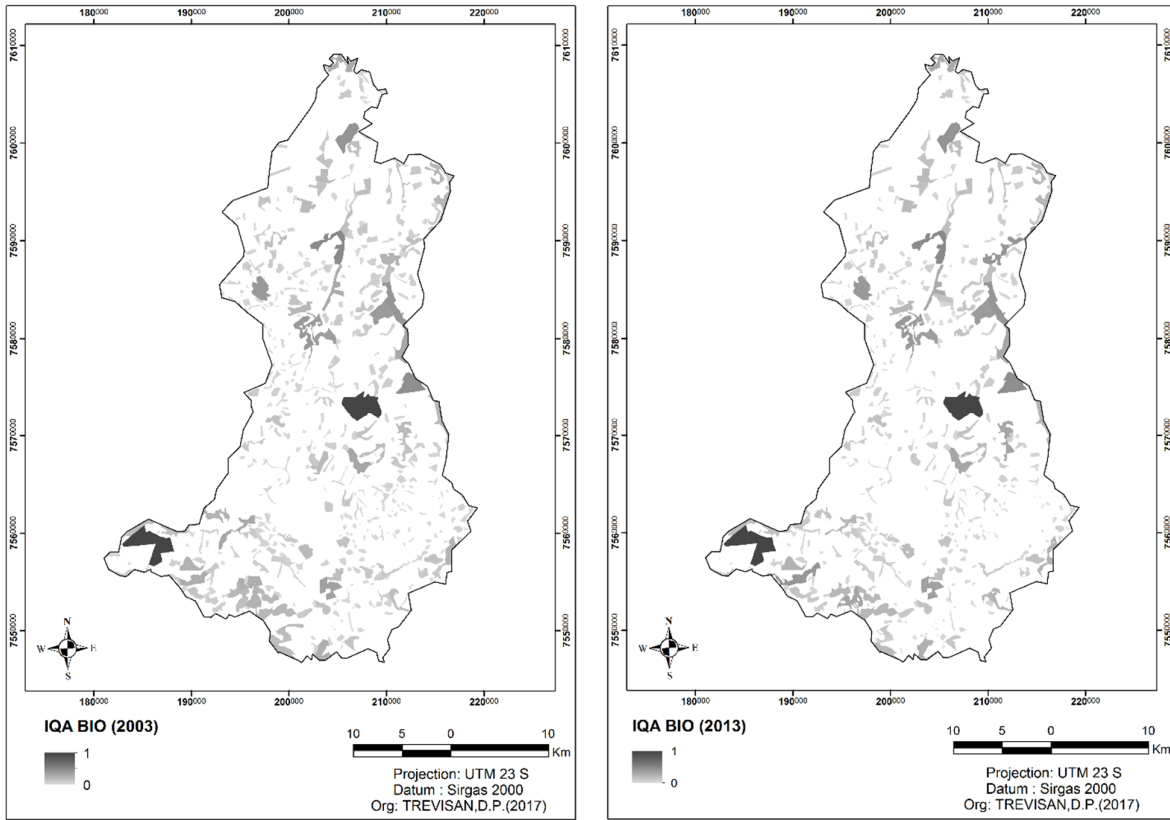


Figure 2: Vegetation Environmental Quality Index (IQA-BIO) in São Carlos – SP, Brazil for 2003 and 2013.

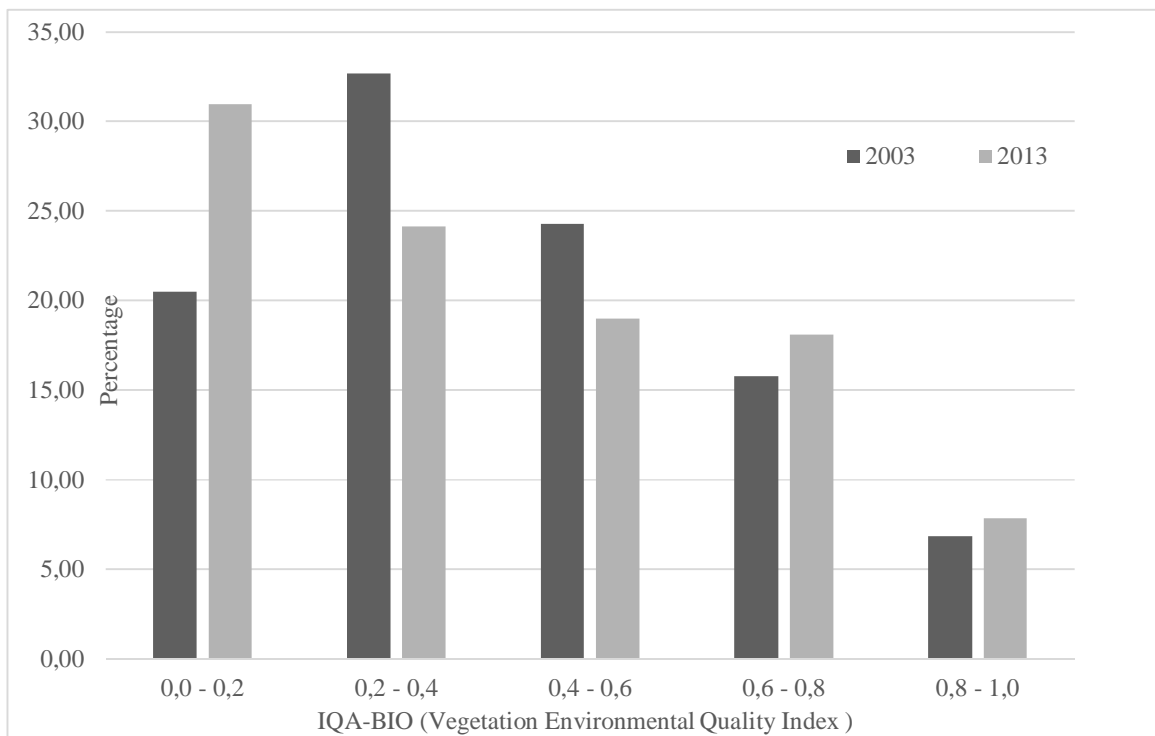


Figure 3: Vegetation Environmental Quality Index (IQA-BIO) intervals.

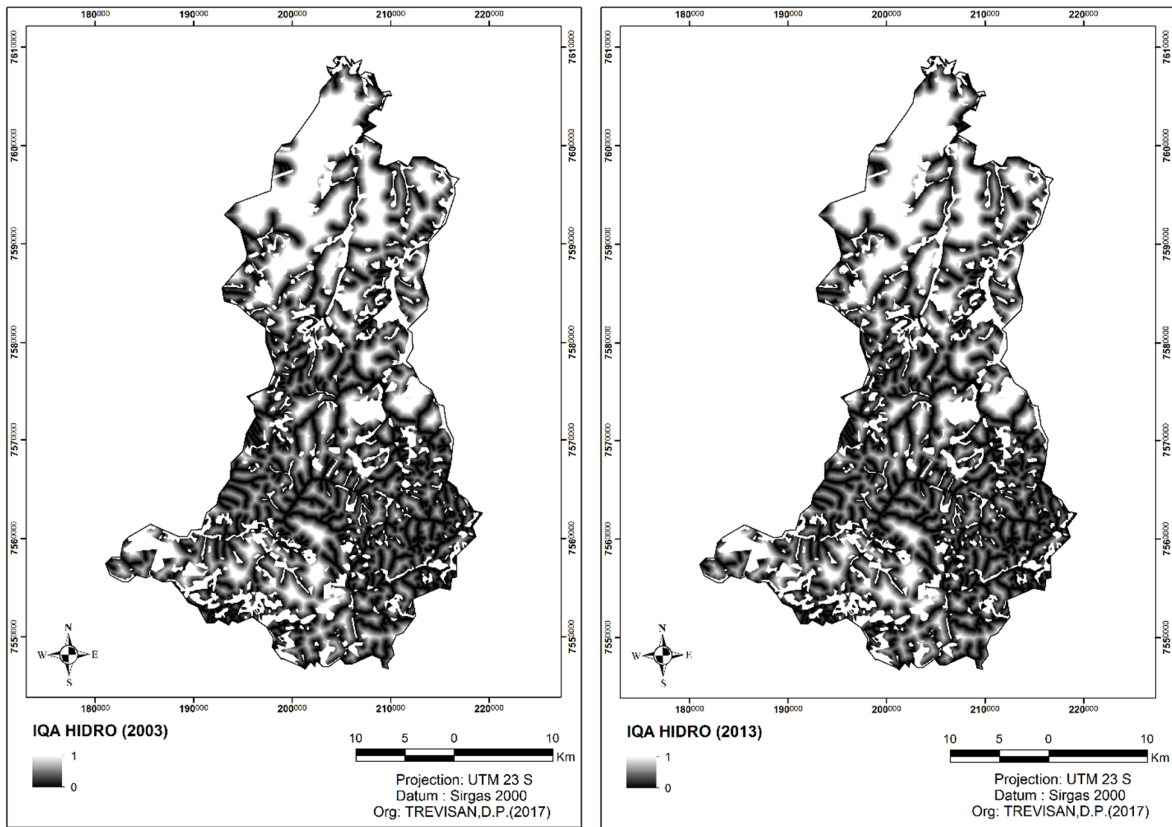


Figure 4: Environmental Quality of Water Resources Index (IQA-HIDRO) in São Carlos – SP, Brazil for 2003 and 2013.

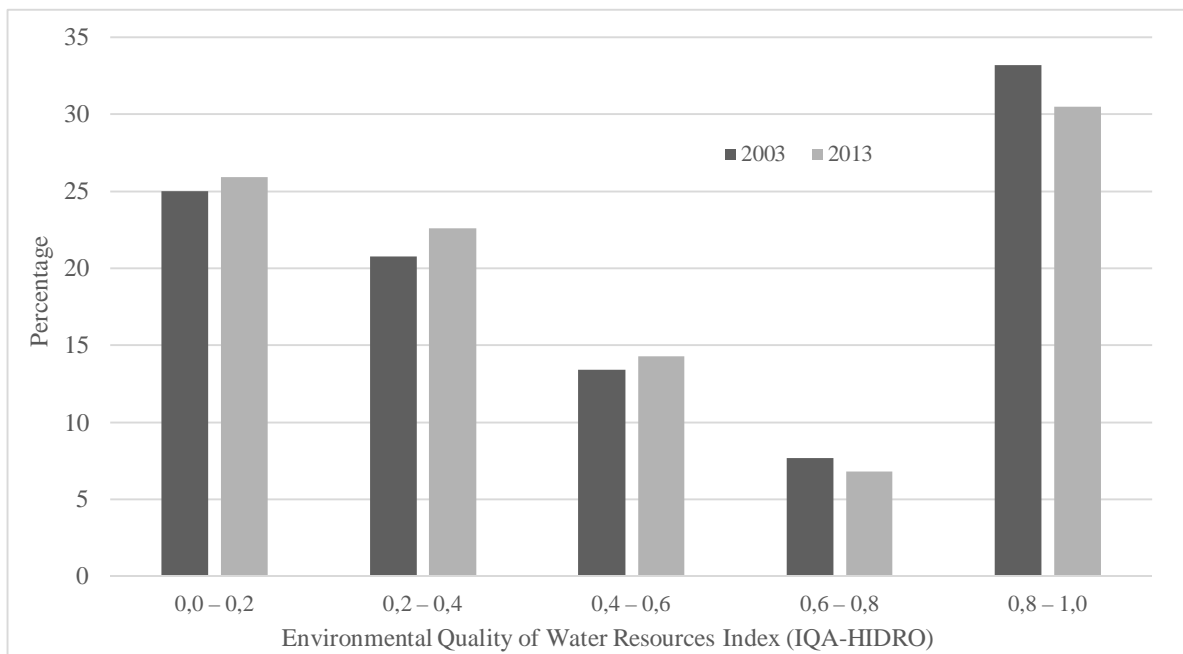


Figure 5: Environmental Quality of Water Resources Index (IQA-HIDRO) intervals.

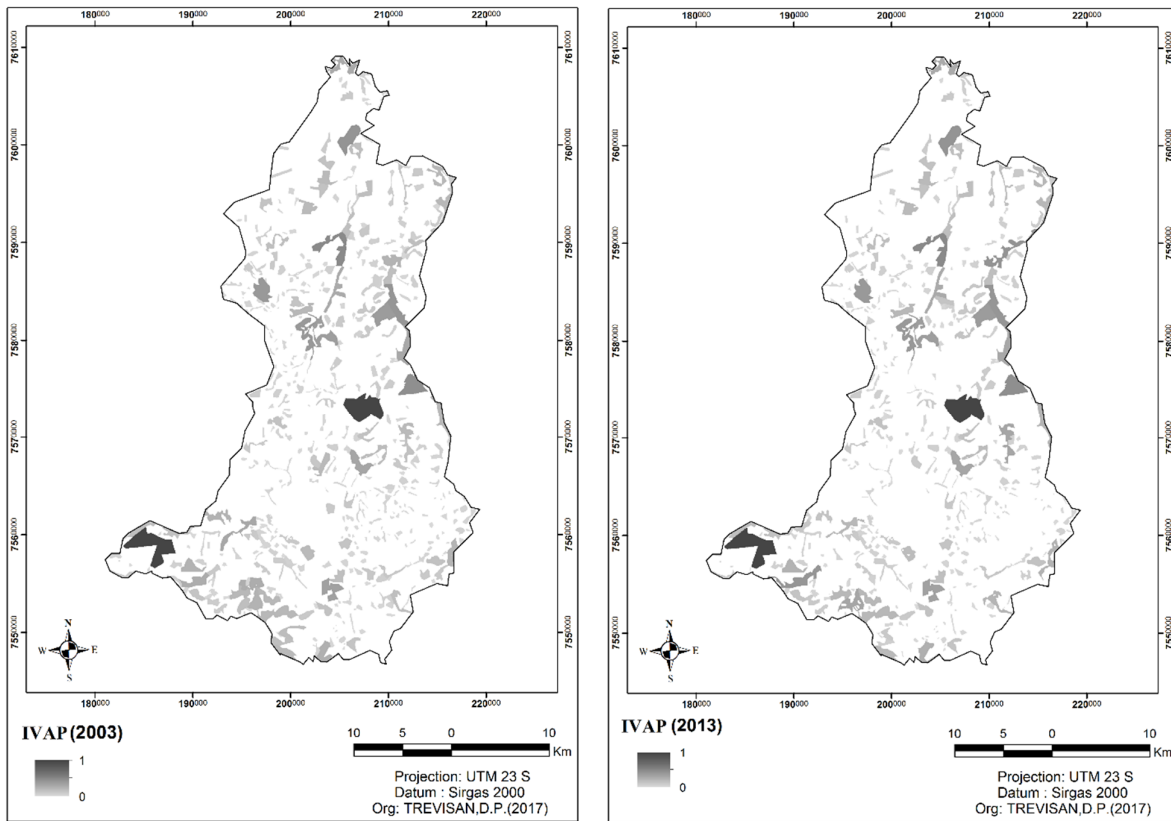


Figure 6: Landscape Environmental Vulnerability Index (IVA-P) in São Carlos – SP, Brazil for 2003 and 2013.

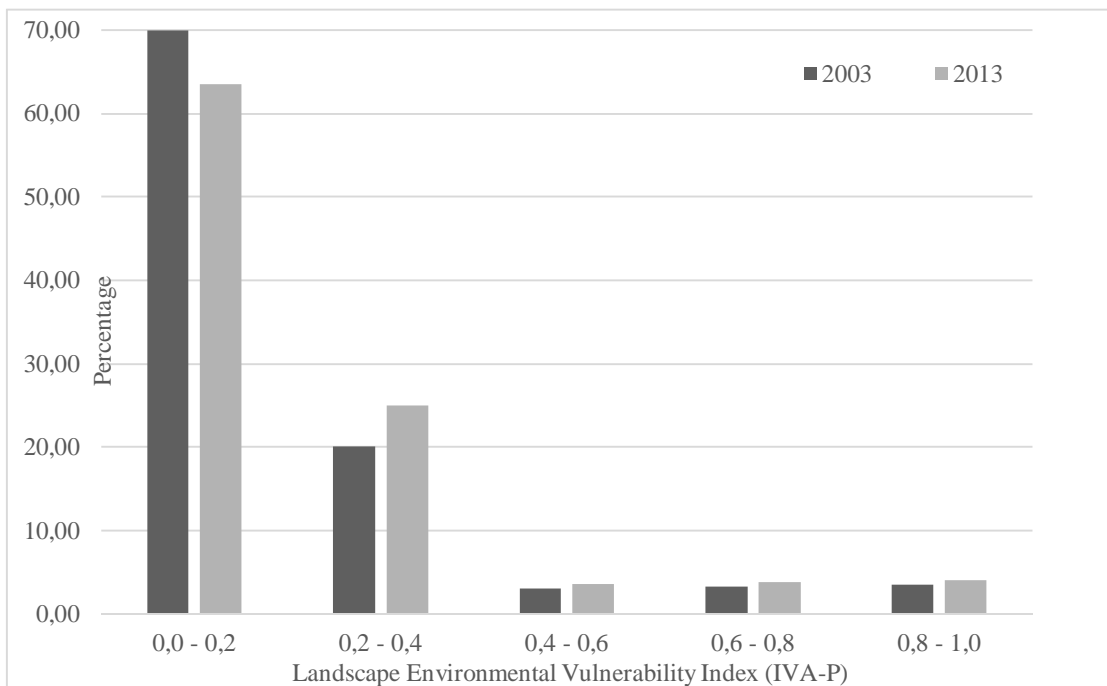


Figure 7: Landscape Environmental Vulnerability Index (IVA-P) intervals.

Table 1: Vegetation Environmental Quality Index (IQA-BIO) values in São Carlos – SP, Brazil. for 2003 and 2013.

Breaks	2003		2013	
	Area (ha)	(%)	Area (ha)	(%)
0.0 – 0.2	4,900.02	20.49	6,455.39	30.96
0.2 – 0.4	7,812.72	32.67	5,028.85	24.12
0.4 – 0.6	5,800.66	24.25	3,959.92	18.99
0.6 – 0.8	3,771.18	15.77	3,773.34	18.10
0.8 – 1.0	1,633.11	6.83	1,633.11	7.83
TOTAL	23,917.69	100.00	20,850.60	100.00

Table 2: Environmental Quality of Water Resources Index (IQA-HIDRO) values in São Carlos – SP, Brazil for 2003 and 2013.

Breaks	2003		2013	
	Area (ha)	(%)	Area (ha)	(%)
0.0 – 0.2	28,472.4	25.0	29,472.4	25.9
0.2 – 0.4	23,763.31	20.8	25,763.31	22.6
0.4 – 0.6	15,251.64	13.4	16,251.64	14.3
0.6 – 0.8	8,746.53	7.7	7,746.53	6.8
0.8 – 1.0	37,833.69	33.2	34,766.6	30.5
TOTAL	114,000.00	100.00	114,000.00	25.9

Table 3: Landscape Environmental Vulnerability Index (IVA-P) values in São Carlos – SP, Brazil for 2003 and 2013.

Breaks	2003		2013	
	Area (ha)	(%)	Area (ha)	(%)
0.0 – 0.2	16,733.9	69.96	13,241.00	63.50
0.2 – 0.4	4,806.49	20.10	5,218.74	25.03
0.4 – 0.6	744.19	3.11	751.19	3.60
0.6 – 0.8	790.83	3.31	793.20	3.80
0.8 – 1.0	842.273	3.52	846.47	4.06
TOTAL	23,917.69	100.00	20,850.60	100.00